

The Inkblot Test



Big Idea: Patterns can be interpreted in all sorts of different ways.

Essential Question: What do you see when you look at a pattern?

Constraints:

Must use Google Draw

Deliverables: Students will create a Picasso-like picture using Google Draw. Then they will make a kaleidoscope effect which will create a pattern. Students will then interpret what they think their pattern looks like.

Suggested Timeline

Day 1 What do you see?	Day 2 How to use Google Draw	Day 3 Creating your pattern	Day 4 Distorting your pattern	Day 5 Interpreting your pattern
<i>Ask</i>	<i>Imagine</i>	<i>Plan/Create</i>	<i>Improve</i>	

Lesson 1 – What do you see?

Psychiatrists used to use what was called a Rorschach or inkblot test. In it, someone would look at a pattern and describe what they saw. Different people might see different things in the pattern. What you saw revealed a little bit about your personality and emotions.

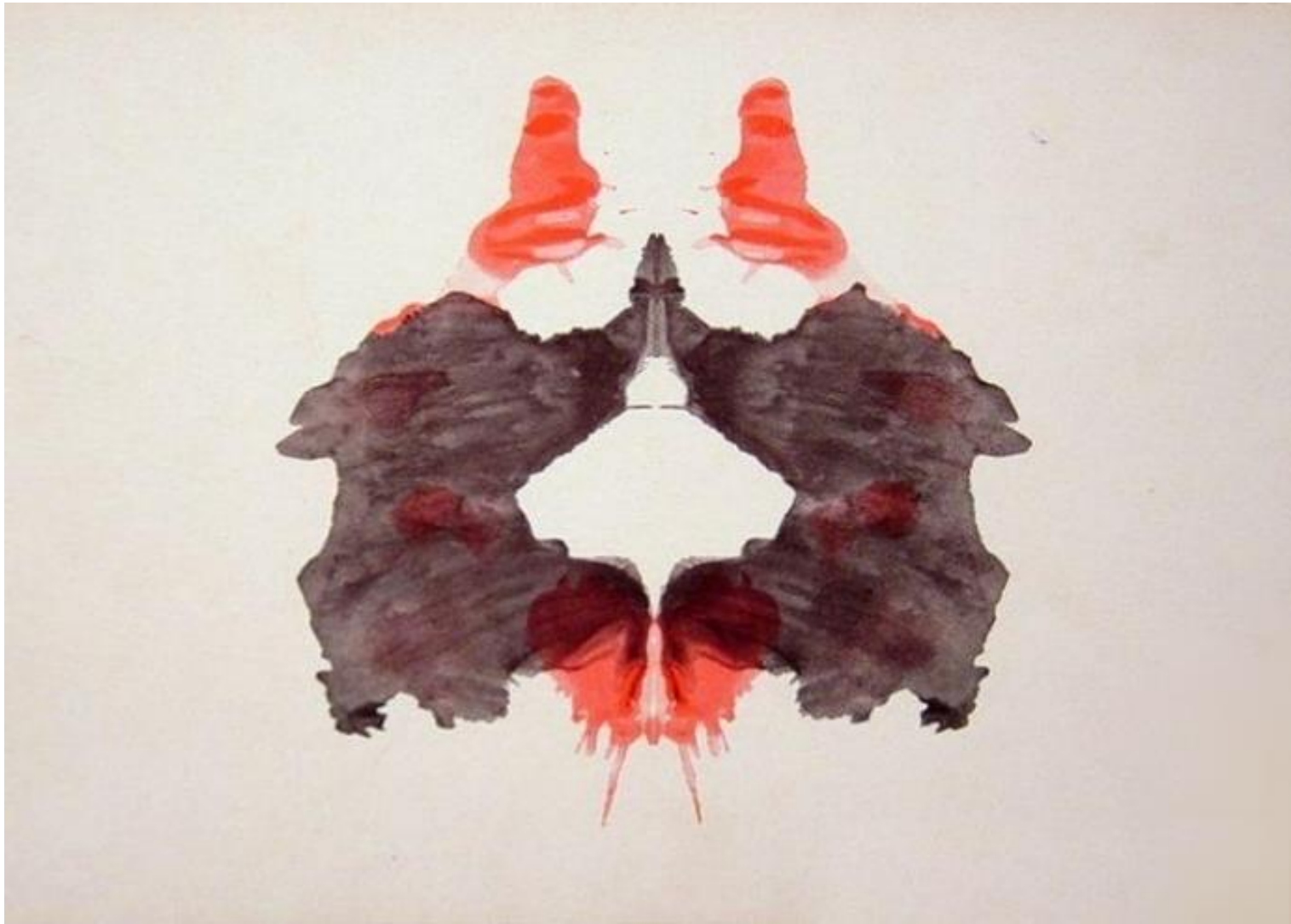
Have the class look at the pattern provided. What do they see in it?

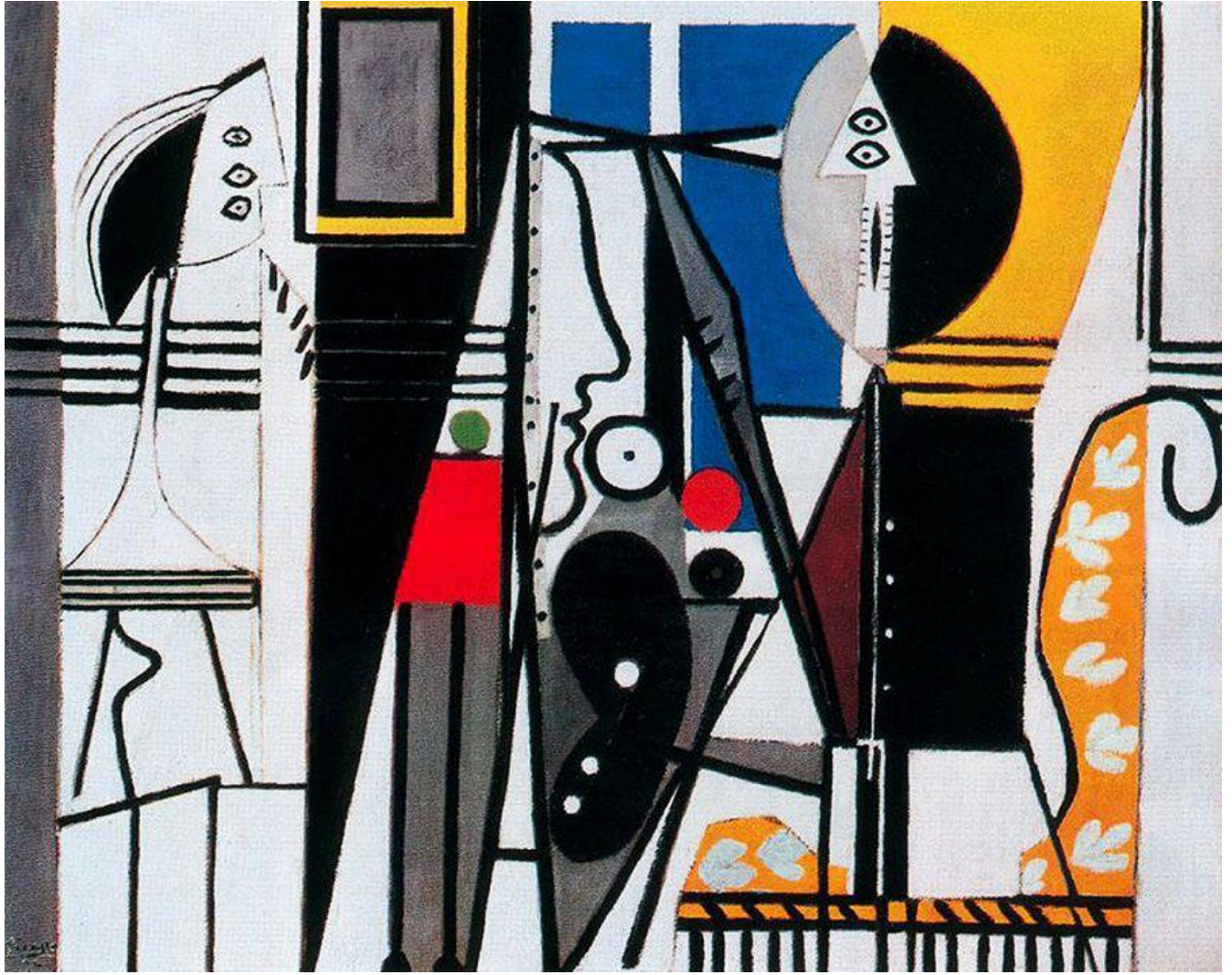
Then look at some works of Pablo Picasso. He created very abstract art that distorted what reality looked like.

Some examples you can use:

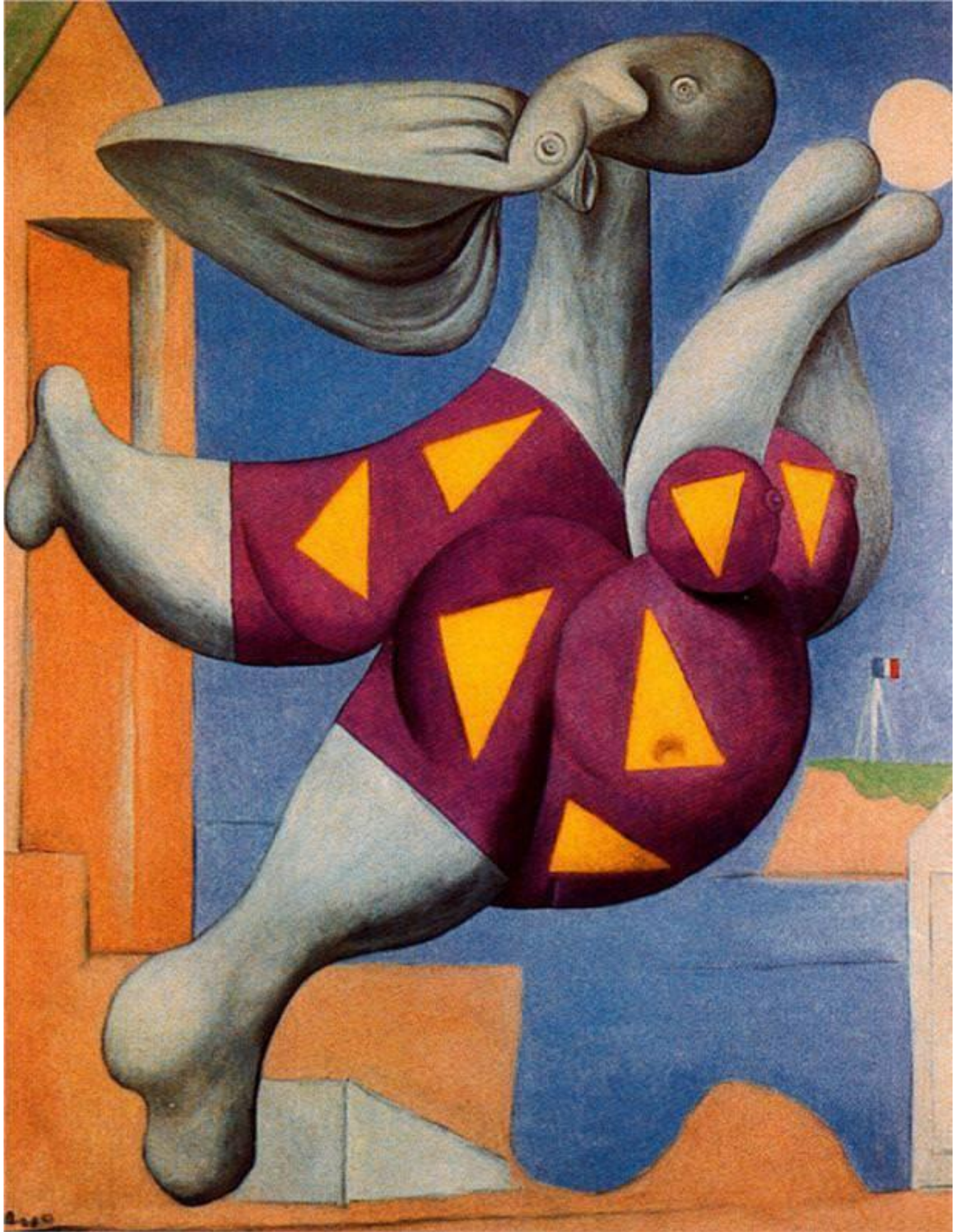
- Painter and Model
- The Accordionist
- Bather with Beach Ball
- Reading

Have students reflect what they think is going on in the paintings. Make sure you do not tell them the titles of the paintings.











Lesson 2 – How to use Google Draw

Go to Google drawings at <https://docs.google.com/drawings>

Change the orientation of the page by going to file and scrolling to page set up

Change the orientation to widescreen so that it is in a landscape perspective

Part 1 – Creating your drawing

Put a rectangle on the page by going to insert and scrolling to the shape icon

Select a rectangle

Once you have drawn it you can change the color of the rectangle by clicking on the paint bucket icon which is the fill color. Select your color

Then fill the rectangle with smaller shapes and lines

You can change the color of these shapes using the fill color icon

You can rotate the shapes by clicking on arrange and scroll down to rotate. You can rotate it vertically or horizontally

If you want to have shapes that are the exact same size, click on them and then go to the edit menu. Scroll to the copy icon and then scroll again to the paste icon. Then move the shape wherever you would like it

In addition to shapes you can add lines

Go to insert and scroll to lines

The curved and the polyline give you more creativity

You start the line by clicking once, then move it, click again, and again. When you have the design you want double click to complete the line

You can add color to the shape by using fill color

If at any time you want to undo work or make a mistake, click on the left facing arrow on the tool bar to take back your last action

Experiment with this until you have a design that you like

Activity 1 – Creating your pattern

Part 2

Once have the design you want to work with, we need to put it in kaleidoscope form. Take your arrow and draw a box around the entire design

Click on arrange and then group it together using the group button

Click and adjust the size so it takes up approximately $\frac{1}{4}$ of the rectangle.

Copy and paste another design and move it right below. You can choose to rotate the design vertically or horizontally by going to arrange and then scrolling down to rotate

Copy both of these designs and paste it on the other side of the page, flipping it vertically or horizontally to your desire

Now the entire rectangular page should be filled with the designs

Make sure you draw a box around it and group it once you feel you have your final design

Activity 2 – Interpreting your pattern

Have a gallery walk where students wander around the room and look at the patterns people created. Students will interpret the patterns for themselves. Then they will turn over the sheet to see what the creator of the pattern saw.

Name of creator _____

What is your interpretation of this pattern?

- 1.
- 2.
- 3.
- 4.
- 5.
- 6.
- 7.
- 8.
- 9.
- 10.
- 11.
- 12.
- 13.
- 14.
- 15.
- 16.
- 17.
- 18.
- 19.
- 20.

This is the interpretation the creator of this pattern saw of their work.

	Google Draw	Interpretation of drawing
<i>Great</i>	<ul style="list-style-type: none"> • Student creates a Picasso-like drawing using a good mixture of lines and shapes • Student creates a unique kaleidoscope effect that makes an interesting pattern 	<ul style="list-style-type: none"> • Provides a detailed explanation of interpretation with examples from the drawing pointed out • Is so clear with the description you can see what the creator sees in the drawing
<i>Good</i>	<ul style="list-style-type: none"> • Student creates a Picasso-like drawing using lines and shapes but uses one much better than the other • Student creates a kaleidoscope effect that makes a pattern but is not that unique or interesting 	<ul style="list-style-type: none"> • Provides an explanation of interpretation with some examples from the drawing pointed out but could be more specific • Is somewhat clear with the description but at times it is difficult to see what the creator sees in the drawing
<i>Needs improvement</i>	<ul style="list-style-type: none"> • Student does not create a Picasso-like drawing using lines or shapes but not both • Student does not create a kaleidoscope effect, difficult to see what the pattern is 	<ul style="list-style-type: none"> • Does not provide a detailed explanation of interpretation and lacks examples from the drawing • Is not very clear with the description as it is difficult to see what the creator sees in the drawing