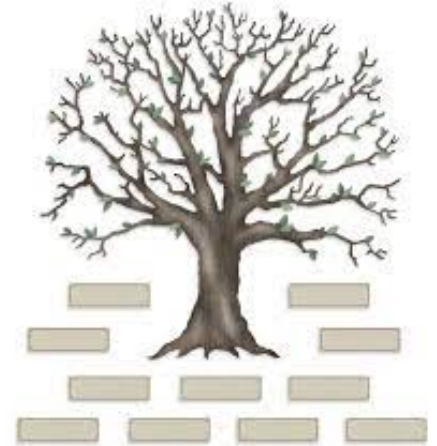


# Family Patterns

## Description:

Family represents a long history of people and events. Because of this, there are patterns that naturally occur. Some of these might be number of children, where they were born, names, and others. These patterns can indicate something about the family.



## Depth and Complexity icons: Patterns

Product: Family tree that goes two generations back and an analysis of the patterns that occur

Bonus opportunity: students can go back three or four generations should they choose or you can create the family tree in another form (i.e. poster, Prezi, ProCreate)

## Skills:

- Research
- Genealogy
- Analysis
- Organizing

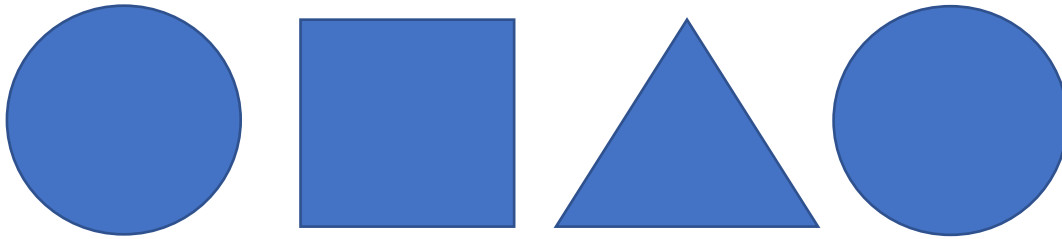
## Calendar:

What are Patterns		What is a family tree?	Research/create family tree	
Research/create family tree		Look for patterns	What do these patterns show?	

## Lesson 1 – What are patterns?

- The order of events
- Elements, events, or ideas that recur
- Logically predictions that can be made based upon the patterns

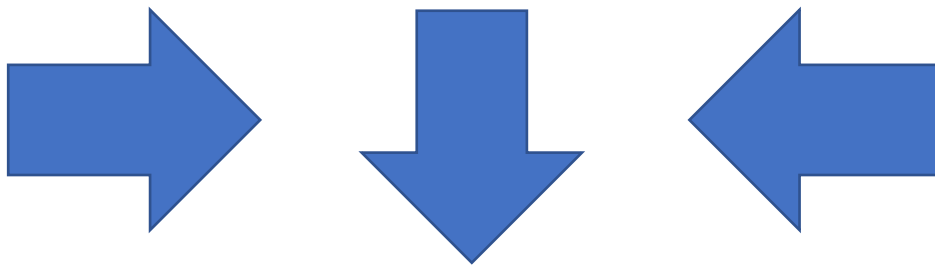
What comes next?



Answer:



Example:



What comes next?

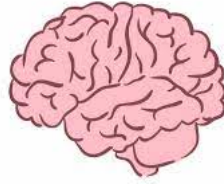


What is the pattern?

The shape is turning one position to the right each time

Patterns in ELA

rain train main



mice twice nice



Patterns in Math

3 6 9 12 15 \_\_\_\_\_

Answer:

18

Pattern: adding three each time

1 2 4 8 \_\_\_\_\_

Answer:

16

Pattern: number is doubling each time

Patterns in Science

Years cicadas showed up by the thousands

1970

1987

2004

2021

How often do cicadas show up?

Every 17 years



Can you predict what will happen next



## Patterns in Social Studies



Why patterns do you notice about where people live in the United States?

Possible answers:

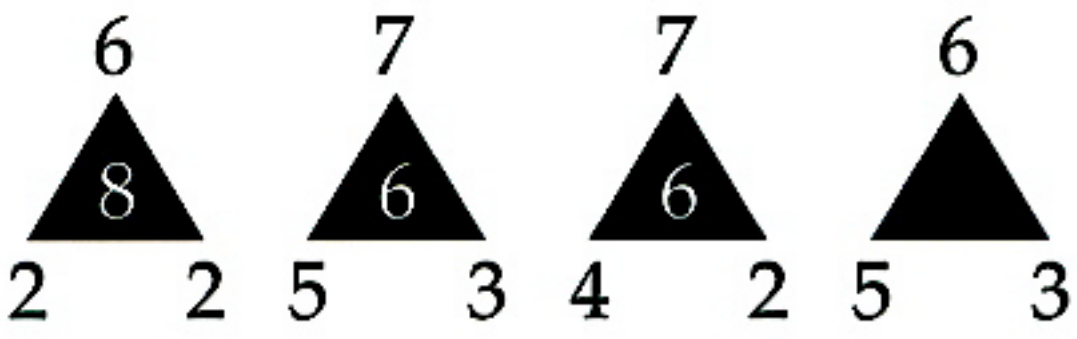
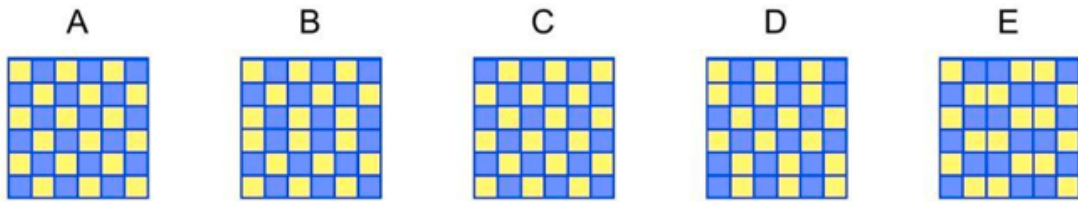
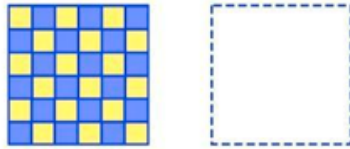
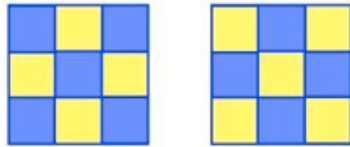
- More in the east than the west
- A lot along the western coast
- Not much where the Rocky Mountains are located
- Florida has some white patches

We talked about this in our Over Time project



What pattern do you notice here?

- Phone gets more advanced over time
- Phones must be important to us
- Purpose of phone begins to change



ANSWER:  
3

The top number minus the bottom left-hand number is multiplied by the bottom right-hand number to give the number inside the triangle.

## Lesson 2 – What is a family tree

A family tree is tracing a person's family back multiple generations

- For example:

Son

Father/Mother

Grandparents

Great Grandparents

Why do people research their family tree?

- Because you might find out things about your family that you never knew

Example family tree

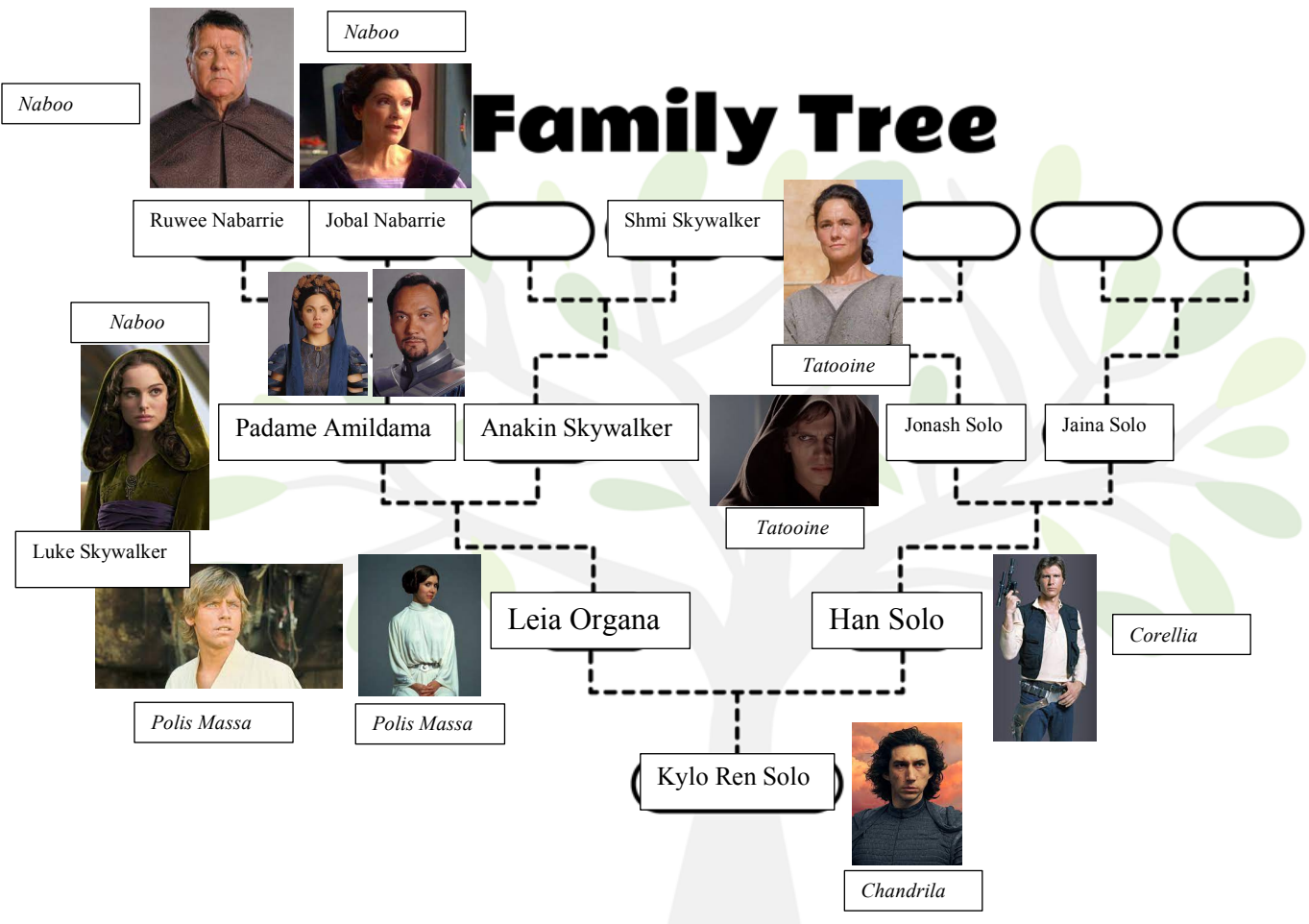
- Kylo Ren from Star Wars
- Because Leia's mom died and her dad became Darth Vader, she was adopted by the Organa's
- We don't know who Anakin's father is because the mother claimed to not have has a husband
- Leia has a brother, Luke Skywalker

Patterns

- Leia's side seems to be more known
- Lot of people born on Naboo
- Even though brother and sister, Luke and Leia have different last names
- Not much known about Han Solo's family including where parents were born



# Family Tree



### Lesson 3 – Researching family tree

You have a few options. You may:

- 1) Research your own family tree, going two generations back to include your grandparents (most information will come from your parent). Need to also find out where they were born.
- 2) Research a historical family tree such as the Royal Family, the Kennedy's, or George Washington's (internet)
- 3) Research a fictional family tree such as the Simpsons, Harry Potter, or Iron Man's (internet)

Bonus Opportunity:

You can go back three or four generations (i.e. great grandparents or great-great-grandparents)

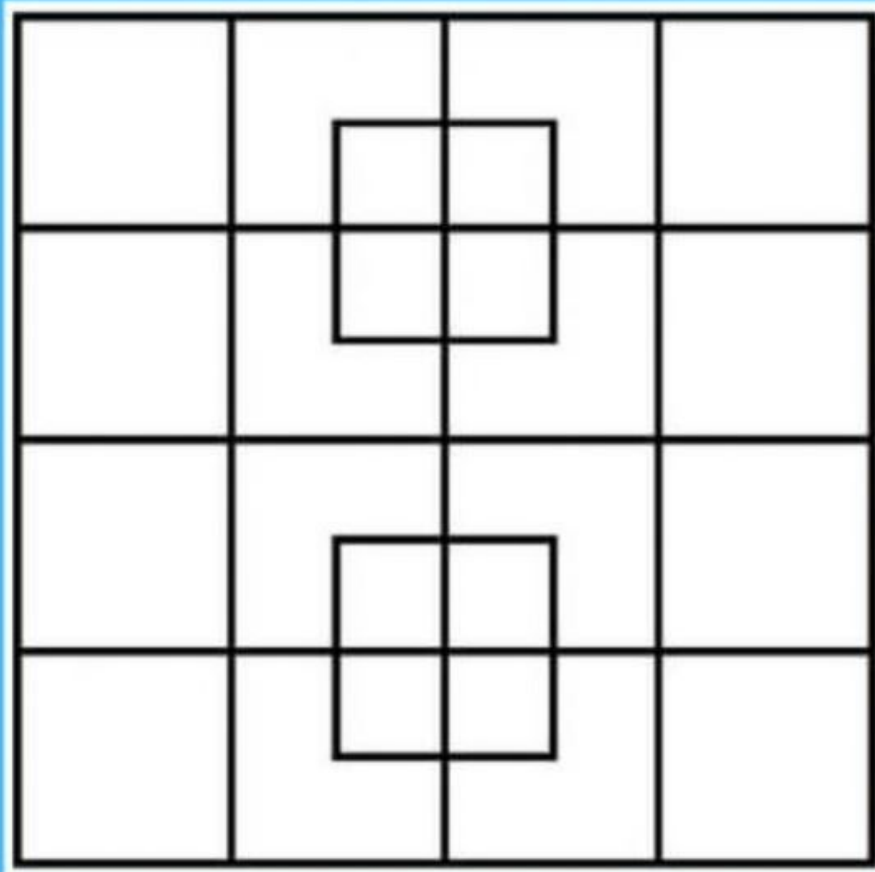
## Lesson 4 – Looking for patterns

Use this graphic organizer to help you to find possible patterns in your family tree.





How many squares do you see?



Video explanation of squares <https://www.youtube.com/watch?v=LZGYDwjUwBI&t=13s>

	Family Tree	Analysis of Patterns
Excellent	<ul style="list-style-type: none"> <li>• Family tree goes back three or more generations.</li> <li>• Family tree is well organized, allowing someone to clearly see the members of each generation and their relation to one another.</li> <li>• Family tree is of high quality, using creativity and color to create it, writing is nicely printed, and/or uses visual aids to illustrate the family history.</li> </ul>	<ul style="list-style-type: none"> <li>• Student takes a look at three or more patterns that can be seen in the family tree.</li> <li>• Connections with the patterns are well explained and make sense with the information that was found.</li> <li>• Patterns that are recognized are deeper in nature rather than just surface level observations.</li> </ul>
Good	<ul style="list-style-type: none"> <li>• Family tree goes back two generations.</li> <li>• Family tree is organized, allowing someone to see how most of the members of each generation are related to one another, but a couple of connections not clear.</li> <li>• Family tree is readable, created in such a way as for someone to see the big picture of this family, but there could be more creativity involved, it is pretty plain and boring.</li> </ul>	<ul style="list-style-type: none"> <li>• Student takes a look at two patterns that can be seen in the family tree.</li> <li>• Connections with the patterns are explained but does not always make sense with the information that was found.</li> <li>• Patterns that are recognized are mostly surface level observations but there are one or two deeper in nature that provide much insight and thought.</li> </ul>
Needs improvement	<ul style="list-style-type: none"> <li>• Family tree goes back only one generation.</li> <li>• Family tree is not well organized, causing confusion as to how the members of each generation are related to one another.</li> <li>• Family tree is of low quality, with poorly printed writing, sloppy visuals, and/or messy set up.</li> </ul>	<ul style="list-style-type: none"> <li>• Student takes a look at one or less patterns that can be seen in the family tree.</li> <li>• Connections with the patterns are not well explained and do not make sense with the information that was found.</li> <li>• Patterns that are recognized are all just surface level observations rather than any that provide insight and thought.</li> </ul>

